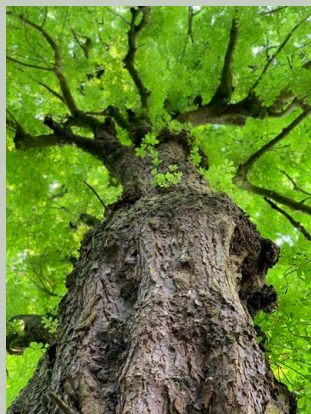
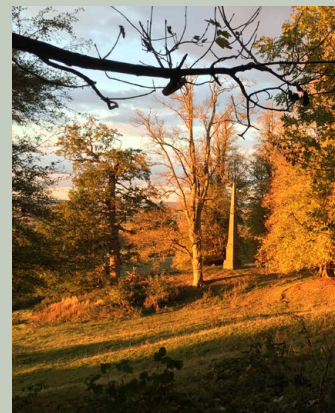
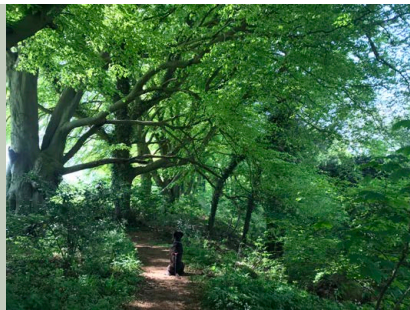


# Radway

Information, 2021





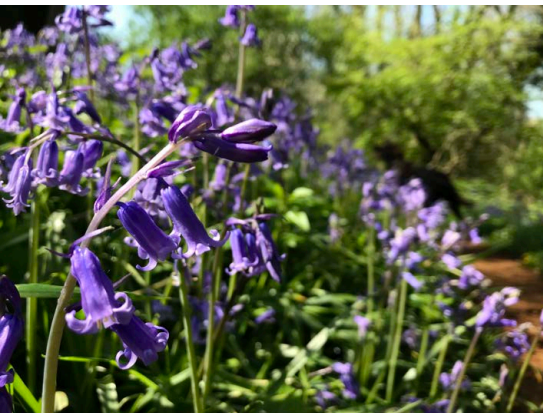
# Contents

## Radway Information

A BRIEF HISTORY OF RADWAY	4
THE VILLAGE	4
VILLAGE WEBSITE	5
VILLAGE NEWSLETTER	5
LOCAL CHURCHES	6
PARISH COUNCIL	7
CHAMBERS TRUST	8
VILLAGE HALL	8
VILLAGE EVENTS AND ACTIVITIES	8
RADWAY EVENTS GROUP (REG)	8
CRAFT AND NATTER	9
SOCIAL TABLE TENNIS	9
THURSDAY CLUB FOR THE OVER 50'S	9
TEA CHAT AND PLAY	9
GARDENING CLUB	9
RADWAY CRICKET CLUB	10
BOOK CLUB	10
RADWAY FILM	10
RECREATION GROUND	11

## Services

WATER	11
ELECTRICITY	11
INTERNET	11
OIL CONSORTIUM	12
LOCAL SUPPLIERS	12
PETROL	12
REFUSE COLLECTION	12



## General Information

STRATFORD-ON-AVON DISTRICT COUNCIL	13
WARWICKSHIRE COUNTY COUNCIL	13
EDUCATION	14
PRIMARY SCHOOLS	14
SECONDARY SCHOOLS	14
LIBRARIES	14
MOBILE LIBRARY SERVICES	14
MEDICAL	15
GP SURGERIES	15
HOSPITALS AND A & E	15
HOSPICES	15
VOLUNTARY BUREAU	15
PRESCRIPTION COLLECTIONS	15
VETS	16
POST OFFICES	16
POLICE, FIRE & RESCUE	16
FLOOD WARNINGS	16
TRANSPORT LINKS	17
JOB CENTRES	17
SHOPPING	18
HOME DELIVERIES	18
FOOD BANK	18
ENTERTAINMENT	19
ARTS CENTRES & ART GALLERIES	19
CINEMAS & THEATRES	19
PUBS & RESTAURANTS	20
TAKE AWAYS & CAFÉS	21



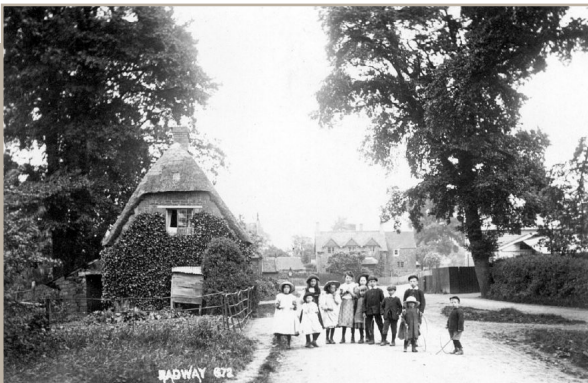
# Welcome to Radway

## Radway Information

### A BRIEF HISTORY OF RADWAY

Radway is mentioned in the Domesday Book. A monastic house, The Grange, was established by the Cistercian Monks from Radmore in the 12th Century and was later turned into a grand house by the Gothic Architect, Sanderson Miller in the 18th Century. The Battle of Edgehill was

fought on the edge of the village and one of the soldiers is said to still haunt here. Henry Fielding is believed to have read some of Tom Jones to a house party at The Grange before it was published. St Peter's Church was built in 1866 and replaced an earlier medieval church. The churchyard has a memorial to a victim of an early motoring accident dated 1899. The ancestors of the American President George Washington lived at The Grange as did Earl Haig, the WW1 General and founder of the poppy appeal. John Profumo was MP for Stratford-upon-Avon and is believed to have stayed in Radway.



### THE VILLAGE

The beautiful village of Radway is a village and civil parish of approximately 250 residents in Stratford-on-Avon District, Warwickshire. It nestles largely at the foot of the escarpment of Edgehill and lies just within the north-eastern part of the Cotswolds Area of Outstanding Natural Beauty (AONB). The village is surrounded by fields, woodland and hedgerows.

The origins of the village lie in Saxon times when the 'Church of Coventry' owned the land and the name Radway is believed to be a corruption from Redweii or Radweis, meaning "red way or road", probably referring to the red-coloured soil.

Radway is concentrated in two parts, separated by the grounds of Radway Grange. The larger part is to the east, but the original focus of the village was Westend, where you will find the site of the original Saxon church and its graveyard as well as many early headstones.

# 4



Radway Grange, originally a farm belonging to the Cistercian monks of Stoneleigh, has an illustrious list of previous residents, including George Washington's great grandfather, the architect Sanderson Miller, and Field Marshall Earl Haig.

Radway is located at the foot of Edgehill and is notable for the Battle of Edgehill, the first engagement of the English Civil War, which was fought in fields and lanes of Radway on 23rd October 1642. The site of the battle is now on Ministry of Defence land and is not accessible to the public, but a monument can be found on the Kineton-Banbury Road where a wreath is laid each year by the Sealed Knot on the anniversary.

At weekends and in the holiday season, numerous walkers pass through Radway as they enjoy one of the many long walks that skirt the village. The most notable of these is the Battlefields Trail, which naturally leads visitors to the award-winning permanent exhibition on the Battle of Edgehill in St Peter's Church:

[www.battleofedgehillexhibitionradway.org.uk](http://www.battleofedgehillexhibitionradway.org.uk)

## VILLAGE WEBSITE

A great source of information is the Village Parish Council's website, to see what events are taking place in the village, to view the village calendar, to see the village hall facilities / book the village hall, to learn about the Parish of Radway generally, or to understand what issues and projects the Parish Council are working on. Please head to the website here:

[www.radwayparishcouncil.org.uk](http://www.radwayparishcouncil.org.uk)

There is also a village community Facebook page. Just search on Facebook for '**Radway Village Community**' and 'like' us.

If you would like to get something added, to either the website or the Facebook page, please contact **Sophie Stephens** on **07880 528004**.

## VILLAGE NEWSLETTER

The Parish Council supports the cost of the monthly Village Newsletter, which is edited by **Puffin Pocock**. Items for inclusion in the newsletter should be submitted by the 20th of the previous month. A team of volunteers distributes the newsletter to every house in the village, and to surrounding farms, so it is a great way to keep in touch with what is going on. Any resident of the village is welcome to submit items for inclusion; please contact Puffin on **01295 678682**.





## LOCAL CHURCHES

### *Church of England, St Peter's Church, Radway*

A church has stood in Radway from mediaeval times, with traces of a much earlier church found during excavations in 2003 by the TV programme Two Men in a Trench.

The original church stood in Westend, but was considered to be in such a dilapidated state it was decided to build a new church on a new site. The stone was used to build the present church, which was designed by C E Buckridge of Oxford, and consecrated in 1866. In 2016 we celebrated the 150th anniversary of its dedication.



For decades people have gathered here to worship. The church has been a place of stability and hope through the years, where people come to celebrate, to give thanks in times of joy, to find comfort in times of sadness and grief, or simply to rest and pray. Many local families have come for baptisms, weddings and funerals or to celebrate the great festivals of Harvest, Christmas and Easter.

The building has hosted concerts and other events over the years and is the home of the permanent Battle of Edgehill Exhibition, which tells the story of the battle fought locally and also the social history of the effect on local people at the time.

Radway is one of the 'Six Parishes' - Combroke, Kineton, Radway, Ratley, Shotteswell and Warmington. Services are held in rotation at varying times in the six parish churches. Details are available in the monthly church newsletter, the 'Parish Link', (delivered to homes in the Parish) and on church notice boards.

The Festival Choir performs at local churches for Easter, Harvest Festival and Christmas. Rehearsals are held on Thursdays at 7.15 pm in Ratley Church 6 weeks before festivals. All are welcome. Contact **Shona Walton** on **01295 670596**.

### **Contact Details**

#### *Priest-in-Charge*

The Reverend Barry Jackson

Tel: **01926 640248**

Email: [barry@edgehillchurches.org](mailto:barry@edgehillchurches.org)

#### *Associate Minister (Part-time)*

The Reverend Dr Richard Cooke

Tel: **07592 544820** (urgent messages)

Tel: **01295 690213** (non-urgent messages)

Email: [richard.cooke@covcofe.org](mailto:richard.cooke@covcofe.org)

#### *Churchwarden*

Brian Douthwaite

Tel: **01926 640314**

# 6

**Methodist Church, Kineton**

The Reverend Peter Powers

Tel: **07941 328155**

**St Francis of Assisi Roman Catholic Church, Kineton**

Father David Tams

Tel: **01608 685259**

## PARISH COUNCIL

This is a publicly elected body of 5 Councillors, holding their posts for 4 years. It is responsible for things such as the village lighting, mowing of verges, recreation field and village greens. It is also asked to comment on planning applications.

The Parish Council meets every other month on the third Thursday and residents are invited to attend. Residents can ask questions or bring issues of concern to the attention of their Councillors but are limited to speak for only 3 minutes each at the start of the meeting. Meetings are held at 8pm in the Village Hall. The minutes and agenda are displayed on the Parish Council notice board just outside the village hall and are also on the website.

A village assembly held twice a year is another opportunity to have your say. This meeting has no formal agenda with no time restrictions and residents can voice and debate with each other and their Councillors regarding issues that they would like their Parish Council to look into.

Access all details via Parish Council website: [www.radwayparishcouncil.org.uk](http://www.radwayparishcouncil.org.uk)

**Chairman**

Tim Smith-Vincent

The Hermitage, Westend

Tel: **01295 670767**

**Vice-chairman**

Peter Wilkins

Gunby Hall, Langdon Lane

Tel: **01295 670229**

**Current Parish Councillors**

Sophie Stephens

Clare Rankin

Penny Gardner

**Parish Clerk**

Ian Wilson

Email: [clerk@radwayparishcouncil.org.uk](mailto:clerk@radwayparishcouncil.org.uk)





# CHAMBERS TRUST

## *Charles Chambers Radway School Endowment Trust*

The Chambers Trust was set up in 1851 to help the children of the Radway access medical supplies, religious education and other educational benefits. Over the course of the last century these requirements have been met by the state and the Church of England village school, which administered the trust, has closed.

The only asset now administered by the Trust is the village recreation ground for which it receives a rental income from the Parish Council. The funds received from this are still available for the children of the village. Children need to apply to the Trustees for funding which should still come within medical, religious and educational remit. For example, it has recently been part of the fund raising effort and a donor for the playground equipment. Application for grants can be made through any trustee or the Vicar of St Peter's church. The trustees are: **Michele Johnson, Sophie Stephens, Clare Rankin and Reverend Barry Jackson.**



## VILLAGE HALL

The Village Hall is a charity run by a Board of Trustees on behalf of the community and is the centre for a thriving social scene within the village. Many clubs use the hall on a weekly basis, and it is also available for private and commercial hire. There is a fully functioning kitchen, tables and chairs, a projector and sound system available. Equipment can be hired for external use. Further details can be found on the Radway Parish Council's website:

[www.radwayparishcouncil.org.uk](http://www.radwayparishcouncil.org.uk)

### *2020 Current Trustees*

Jim Brown  
Rosie Bampton  
Mike Trotman

Rob Cooper  
John Hutchison  
Jean Welsby

Janet Gibbins  
Tim Smith-Vincent

## VILLAGE EVENTS AND ACTIVITIES

### **RADWAY EVENTS GROUP (REG)**

This group was established in 2015 to provide social and fundraising events for the village, to build social interaction and a community spirit, to support our communal facilities (i.e. St Peter's Church and the Village Hall), and to have fun!

Everyone is welcome to attend any of the planning meetings (usually held in the village hall) details of which can be found in the village newsletter and on the website. A programme of events is usually planned at the beginning of each year - new ideas always welcome!

Contact **Puffin Pocock** on **01295 678682** or **Lilian Smith-Vincent** on **01295 670767** for more details.

# 8



## CRAFT AND NATTER

This group is held on the second Tuesday of each month between 2-4 pm and is usually held in someone's home.

Contact **Lilian Smith-Vincent** on [01295 670767](tel:01295670767) or **Sandra Wilkins** on [01295 670229](tel:01295670229) for more details.

## SOCIAL TABLE TENNIS

Every Tuesday evening from September - May inclusive in the Village Hall at 7.30-8.30 pm. All equipment supplied. Cost £1.50 a week.

Contact **Peter Wilkins** on [01295 670229](tel:01295670229) for more details.

## THURSDAY CLUB FOR THE OVER 50'S

Alternate Thursdays from September to April and once a month in May, June and July between 2.30-4.30 pm in the Village Hall. Most meetings have a speaker but if not then a quiz or a bingo session is arranged. Tea, cake and raffle at each meeting. Annual subscription of £2.50 plus £1.50 each session.

Contact **Liz Manwaring** on [01295 670662](tel:01295670662) for more details or just come along - new members welcome anytime!

## TEA CHAT AND PLAY

In February 2019, St Peter's Church launched a weekly tea, chat and play session in the Village Hall on a Wednesday afternoon between 3 and 5 pm. This has become very popular, providing a regular opportunity for folk from the village to come along and meet up with one another over a cuppa and biscuits or cake. Thanks to a grant from the Diocese, there is no charge, and the sessions are open to everyone, from babies to grandparents. For those with young children we provide toys and a space for children to play, while parents can sit and chat. People are welcome to pop in for 10 minutes or to stay for the whole time.

The sessions are always led by a member of the Church Council who have undergone safeguarding training.

Contact **Michele Johnson** on [07976 292001](tel:07976292001) for more details.

## GARDENING CLUB

Radway Gardening Club, established in 1982, meets monthly in the Village Hall from September to June on the 4th Monday of the month at 7.30 pm. During the summer months 2 outings to local gardens of interest are made by car. This is a friendly club with a small but very loyal membership. Always room for more members! Annual subscription is £7.50.

Contact **Brian Douthwaite** on [01926 640314](tel:01926640314) for more details.





## RADWAY CRICKET CLUB

This club plays at the Cricket Field, Tysoe Road, Radway. Saturday matches played in South Northants Cricket League from May to August. Occasional Sunday friendly matches are played. Junior teams play in South Northants Junior Cricket League, age groups dependent on player numbers. Winter 6-a-side team play in Banbury Indoor Cricket League.

Contact **Philip Douthwaite** on **07767 641362** or [p.douthwaite@btinternet.com](mailto:p.douthwaite@btinternet.com)



## BOOK CLUB

Radway Book Club has been running for more than 10 years and meets on the last Wednesday of each month. The club, which is free, meets in member's houses and discuss a different book each month. A wide and varied selection of fiction and non-fiction are read which generate lively and entertaining discussion. Occasionally we invite a local author to discuss their book when a larger venue is used.

Contact **Jim Brown** on **01295 678990**



## RADWAY FILM

Films are shown in the Village Hall on a monthly basis. A members only group has been established by the Village Hall Trustees to show a film at least 10 times a year, on the fourth Friday of the month (excluding Christmas and August). Members suggest suitable titles and the film is usually one that has recently been in the cinema and is out on DVD. The hall has a high quality sound and vision system and film goers are encouraged to bring their drinks and enjoy a convivial evening. Children's films are shown at 4-30 pm, and the main film at 7-30 pm. Membership costs £25 per annum for a household, and £15 per annum for an individual.

Contact a **Village Hall Trustee** for further information via the village website: [www.radwayparishcouncil.org.uk](http://www.radwayparishcouncil.org.uk)



## RECREATION GROUND

With help from the Parish Council, the local community and The National Lottery Community Fund, the playground was refurbished and upgraded in November 2019. Radway's new toddler area contains the following new pieces of equipment:

1. A multi play unit which has a tunnel, slide and many other little components (including DDA approved steps to make it an inclusive piece of equipment)
2. A fire truck for imaginative play
3. A manipulative play panel
4. A new roundabout.

Play equipment is for children up to the age of 15.



# Services

## WATER

This is supplied by Severn Trent water.  
Service enquiries and emergencies: Tel: **0800 783 4444**

## ELECTRICITY

Emergency loss of supply: Tel: **0800 6783 105**

## INTERNET

The village currently benefits from a 50Mb broadband connection. The speeds may vary depending on your supplier, package and distance from the hubs.



## OIL CONSORTIUM

There is a not for profit oil consortium in Radway, affiliated to a larger one organized in Gaydon. The consortium is able to buy oil in bulk to achieve a better price than an individual purchaser. Orders are made 5 times a year - in January, March, June, September and November and the minimum order per household is 500 litres. The Radway coordinator is Paul Grenet. Paul contacts members by email each time and will inform you about cost, delivery and payment arrangements (they vary with each company).

If you wish to join the consortium please contact **Paul Grenet** on **01295 670978** or **paul@pgcomputing.co.uk**

# 11



## LOCAL SUPPLIERS

*For diesel, logs, coal, oil and bottled gas.*

**Red Horse Vale Ltd.**

Windmill Farm, Banbury Road, Oxhill, CV35 0RP

Tel: **01926 642832** Email: [enquiries@redhorsevale.co.uk](mailto:enquiries@redhorsevale.co.uk)

## PETROL

***Euro Garages & SPAR***

Banbury Rd, Gaydon CV35 0HA

Tel: **01926 641734**

***Pillerton Garage***

Banbury Rd, Pillerton Priors, CV35 0PB

Tel: **01789 740285**

Further petrol stations available in **Banbury**, 8 miles away.



## REFUSE COLLECTION

**Household rubbish** (black bins) collected fortnightly on Wednesdays (alternate week to recyclable).

**Recyclable rubbish** (blue bins) collected fortnightly on Wednesdays (alternate week to household rubbish).

**Garden waste** (green bins) collected fortnightly on Wednesdays (same week as recyclable).

Any problem with refuse and recycling disposal contact **Stratford-on-Avon District Council** on **01789 260616**.



# General Information

## STRATFORD-ON-AVON DISTRICT COUNCIL

Elizabeth House, Church Street, Stratford-upon-Avon, CV37 6HX

[www.stratford.gov.uk](http://www.stratford.gov.uk)

This council is responsible for refuse collections, planning matters, council tax, pest control, leisure services and health and safety.

General enquiries	Tel: <b>01789 267575</b>
Electoral register (register at any time)	Tel: <b>01789 260210</b>
Pest control	Tel: <b>01789 260812</b>
Council tax enquiries	Tel: <b>01789 260990</b>
Planning applications	Tel: <b>01789 260303</b>
Tree Preservation	Tel: <b>01789 260335</b>

### *District Councillor*

John Feilding

Email: [john.feilding@stratford-dc.gov.uk](mailto:john.feilding@stratford-dc.gov.uk)



## WARWICKSHIRE COUNTY COUNCIL

Shire Hall, Warwick, CV34 4RR

[www.warwickshire.gov.uk](http://www.warwickshire.gov.uk)

This council is responsible for issues such as roads, schools, social services, the provision of emergency services and the environment.

General enquiries	Tel: <b>01926 410410</b>
Countrywide bus pass <i>(free for those of state pensionable age or having a disability)</i>	Tel: <b>01926 410410</b>

### *County Councillor*

Chris Williams

Tel: **01295 770792**

Email: [chriswilliams@warwickshire.gov.uk](mailto:chriswilliams@warwickshire.gov.uk)

### *Member of Parliament*

The MP for Kenilworth and Southam is **Jeremy Wright**.

Jubilee House, Smalley Place, Kenilworth, CV8 1QG

Tel: **01926 853650**

Fax: **01926 854615**

Email: [jeremy@jeremywright.org.uk](mailto:jeremy@jeremywright.org.uk)

# 13



## EDUCATION

### PRIMARY SCHOOLS

Tysoe C of E Primary School

Tel: **01295 680244**

[www.tysoe.warwickshire.sch.uk](http://www.tysoe.warwickshire.sch.uk)

Kineton C of E Primary School

Tel: **01926 640397**

[www.kinetonprimarieschool.org.uk](http://www.kinetonprimarieschool.org.uk)

### SECONDARY SCHOOLS

Kineton High School

Tel: **01926 640465**

[www.kinetonhighschool.org.uk](http://www.kinetonhighschool.org.uk)

King Edward VI Boys School

Tel: **01789 293351**

[www.kes.net](http://www.kes.net)

Stratford Girls' Grammar School

Tel: **01789 293759**

[www.sggs.org.uk](http://www.sggs.org.uk)

## LIBRARIES

### *Banbury Library*

Marlborough Road, Banbury, OX16 5DB

Tel: **01295 262282**

[banbury.library@oxfordshire.gov.uk](mailto:banbury.library@oxfordshire.gov.uk)

### *Kineton Community Library*

Kineton Village Hall, Mill Street, Kineton, CV35 0LB

Tel: **01926 641774**

[kineton-parish-council@btconnect.com](mailto:kineton-parish-council@btconnect.com)

### *Wellesbourne Library*

Kineton Road, Wellesbourne, CV35 9NF

Tel and Fax: **01789 840528**

[libraryenquiryteam@warwickshire.gov.uk](mailto:libraryenquiryteam@warwickshire.gov.uk)

## MOBILE LIBRARY SERVICES

[www.warwickshire.gov.uk/mobilelibraries](http://www.warwickshire.gov.uk/mobilelibraries)

The mobile library visits Radway on every third Tuesday of the month. The library calls at the bus shelter from 12.10 - 12.30 pm. For details please see the village newsletter.



## MEDICAL

### GP SURGERIES

#### Cropredy Surgery

Tel: **01295 758372**

#### Fenny Compton

Tel: **01295 770855**

#### Kineton (Branch surgery of Hastings House, Wellesbourne)

Tel: **01789 840245**

#### Kineton - Vale of the Red Horse

Tel: **01926 640471**

#### Shenington (Branch surgery of Fenny Compton)

Tel: **01295 678124**

#### Tysoe (Branch surgery of Vale of the Red Horse, Kineton)

Tel: **01295 680220**



### HOSPITALS AND A & E

#### Horton General Hospital, Banbury (A&E)

Tel: **01295 275500**

#### Stratford Hospital, Stratford-upon-Avon

Tel: **01789 205831**

#### Warwick General Hospital, Warwick (A&E)

Tel: **01926 495321**

### HOSPICES

#### Katherine House Hospice, Adderbury

Tel: **01295 811866**

#### Myton Hamlet Hospice, Warwick

Tel: **01926 407902**

#### Shakespeare Hospice, Stratford-upon-Avon

Tel: **01789 266852**

### VOLUNTARY BUREAU

For voluntary transport to hospital appointments (there is a mileage charge).

#### Shipston-on-Stour

Tel: **01608 663122**

### PRESCRIPTION COLLECTIONS

If you are unable to collect your prescription from the Shenington surgery, we have village volunteers who can help by collecting and delivering it to you. Any person wishing their prescription to be included in the collection must tell the surgery. Those who kindly offer to help will be guided in their first duty. Help is always available from anyone on the list. The rota is issued in December which will cover the next 14 months. Any person wishing to offer their help on a rota to collect and hand out the prescriptions, please contact **Michele Johnson** on **01295 670770** or **07976 292001**.

# 15



## VETS

Avonvale Equine Veterinary Practice, Ratley

Tel: [01295 670501](tel:01295670501)

Avonvale Veterinary Centres, Wellesbourne

Tel: [01789 841072](tel:01789841072)

Hook Norton Veterinary Group, Hook Norton

Tel: [01608 730085](tel:01608730085)

SJ Hales Veterinary Group, Kineton

Tel: [01926 641000](tel:01926641000)

Vets4Pets, Pets at Home, Banbury

Tel: [01295 253941](tel:01295253941)

## POST OFFICES

Kineton Post Office, Banbury Street, Kineton, CV35 0JS

Tel: [01926 640256](tel:01926640256)

Tysoe Post Office, Main Street, Tysoe, CV35 0SE

Tel: [01295 680632](tel:01295680632)

## POLICE

Wellesbourne Police - Tel: [01789 444600](tel:01789444600)

Office of the Police & Crime Commissioner for  
Warwickshire - Tel: [01926 733523](tel:01926733523)

[www.warwickshire-pcc.gov.uk](http://www.warwickshire-pcc.gov.uk)



## FIRE & RESCUE

Wellesbourne fire station - Tel: [01789 841629](tel:01789841629)

[www.warwickshire.gov.uk/fireandrescue](http://www.warwickshire.gov.uk/fireandrescue)

## FLOOD WARNINGS

Flood Warnings Environment Agency

[www.gov.uk/government/organisations/environment-agency](http://www.gov.uk/government/organisations/environment-agency)

Warwickshire County Council - report a flood

[www.warwickshire.gov.uk/flooding](http://www.warwickshire.gov.uk/flooding)

## TRANSPORT LINKS

The **number 6** bus service goes to and from Banbury and Stratford-Upon-Avon. Please check the village timetable on the village bus stop, or on the **Johnson Coaches** website: [www.johnsoncoaches.co.uk](http://www.johnsoncoaches.co.uk)

## JOB CENTRES

### Stratford-upon-Avon Jobcentre Plus

38 Wood Street  
Stratford-upon-Avon  
CV37 6JG

Tel: **0800 169 0190**

### Leamington Spa Jobcentre Play

58 Brandon Parade  
Leamington Spa  
CV32 4JE

Tel: **0800 169 0190**

### Banbury Jobcentre Plus

Crown Buildings  
Southam Road  
Banbury  
OX16 2EX

Tel: **0800 169 0190**







## SHOPPING

### *Kineton*

**The Co-operative Food**, 3 Banbury St, Kineton, CV35 0JS

**Corner Cottage Bakery**, Southam St, Kineton, CV35 0LN

**HC Lewis Butchers**, Banbury St, Kineton, CV35 0JS

**Kineton Pharmacy**, Warwick Road, Kineton, CV35 0HN

**Select Convenience & Post Office**, Banbury Street, Kineton, CV35 0JS

### *Tysoe*

**Tysoe Post Office & gift shop**, Main Street, Tysoe, CV35 0SE

**Tysoe Village Stores**, 31 Main Street, Warwick CV35 0SE

**Carpenters Farm Shop & Butchers** is on B4100 between Warmington and Shotteswell turns.

The petrol station at **Gaydon** has a **SPAR** and a **cashpoint ATM**.

A wider range of shops and supermarkets can be found in **Banbury** (9 miles), **Stratford-upon-Avon** (15 miles), **Leamington Spa** (15 miles) and **Warwick** (15 miles).



## HOME DELIVERIES

**Milk and More** deliver to Radway on Tuesday, Thursday and Saturday they also have a range of groceries which they will also deliver. Arrange online: [www.milkandmore.co.uk](http://www.milkandmore.co.uk)

## FOOD BANK

**Fosse Foodbank**, Kineton

**Fiona Penson**, Project Coordinator - Tel: [07964 412010](tel:07964412010)

## ENTERTAINMENT

### ARTS CENTRES

The Mill, Banbury - [www.themillartscentre.co.uk](http://www.themillartscentre.co.uk)

Warwick Arts Centre, Coventry - [www.warwickartscentre.co.uk](http://www.warwickartscentre.co.uk)

### ART GALLERIES

Compton Verney - [www.comptonverney.org.uk](http://www.comptonverney.org.uk)

Upton House - [www.nationaltrust.org.uk/upton-house-and-gardens](http://www.nationaltrust.org.uk/upton-house-and-gardens)



### CINEMAS

Everyman Cinema, Bell Court, Wood Street, Stratford-upon-Avon, CV37 6JW

Odeon Cinema, Horse Fair, Banbury OX16 0AH

Royal Spa Centre Cinema, Newbold Terrace, Leamington Spa, CV32 4HN

Vue Cinema, Portland Place, Leamington Spa, CV32 5ET

### THEATRES

Bridge House Theatre, Warwick School, Myton Road, Warwick, CV34 6PP

Chipping Norton Theatre, 2 Spring Street, Chipping Norton, OX7 5NL

Loft Theatre, Victoria Colonnade, Leamington Spa, CV31 3AA

The Other Place, 22 Southern Lane, Stratford-upon-Avon, CV37 6BH

Playbox Theatre, Stratford Road, Warwick, CV34 6LE

Royal Shakespeare Theatre, Waterside, Stratford-upon-Avon, CV37 6BB

The Swan Theatre, Waterside, Stratford-upon-Avon, CV37 6BB

Warwick Arts Centre, University of Warwick, Coventry, CV4 7AL





## PUBS & RESTAURANTS

### **The Bell**

Kenhill Road, Shenington, Banbury OX15 6NQ

Tel: **01295 670274**

### **The Castle Inn**

Edge Hill, Ratley, Banbury OX15 6DJ

Tel: **01295 670255**

### **The Chandlers Arms**

Sibford Road, Epwell, Oxon OX15 6LH

Tel: **01295 780153**

### **The Dun Cow**

West End, Hornton, Banbury OX15 6DA

Tel: **01295 670524**

### **The Falcon**

Warwick Road, Warmington, Banbury OX17 1JJ

Tel: **01295 692120**

### **The Kitchen**

Primrose Hill Farm, Arlescote, Banbury, OX17 1DQ

Tel: **01295 690615**

### **The Malt Shovel Inn**

Church Road, Gaydon, Warwick CV35 0ET

Tel: **01926 641221**

### **The Peacock**

Main Street, Oxhill, Warwick CV35 0QU

Tel: **01295 688060**

### **The Plough Inn**

Mollington Lane, Warmington, Banbury OX17 1BX

Tel: **01295 690666**

### **The Rose & Crown**

Featherbow Lane, Ratley, Banbury OX15 6DS

Tel: **01295 678148**

### **The Royal Oak**

Whatcote, Shipston-on-Stour CV36 5EF

Tel: **01295 688100**

### **The Yew Tree**

Main Street, Avon Dassett, Southam CV47 2AS

Tel: **01295 690868**

# 20



## TAKE AWAYS

### Chinese Takeaway, Peacock Inn

Main Street, Upper Tysoe, Warwick CV35 0SE

Tel: **01295 680338**

### The Indian Queen

Stratford Road, Banbury OX15 6HX

Tel: **01295 678888**

### Kineton Chippy

Banbury Street, Kineton, Warwick CV35 0JS

Tel: **01926 930363**

### Shukurs Brasserie

Bridge Street, Kineton, Warwick CV35 0HP

Tel: **01926 642171**

## CAFÉS

### Garden Shed Café

Compton Verney Art Gallery and Park, Compton Verney, CV35 9HZ

Tel: **01926 645500**

### Gilks' Garage Café

Banbury Road, Kineton, Warwick CV35 0JZ

Tel: **01926 640539**

### Lighthorne Pavilion Café

Chesterton Road, Lighthorne, Warwick CV35 0AD

Tel: **07768 195882**

### Monkeybean Coffee Shop

Sugarswell Business Park, Banbury OX15 6HW

Tel: **020 3983 8685**

### The Mulberry Café

High Street, Cropredy, Banbury OX17 1NH

Tel: **01295 750020**

### Thyme for Tea Tearooms

Kineton, Warwick CV35 0JQ (behind 'Flower Thyme' florists)

Tel: **01926 640437**

### Tysoe Tea Room

Stone Cottage, Main Street, Upper Tysoe, Warwick CV35 0SE

Tel: **01295 688333**





# Radway

**Information, 2021**

Prepared by Puffin Pocock, Lillian Smith-Vincent and Zanna McKail